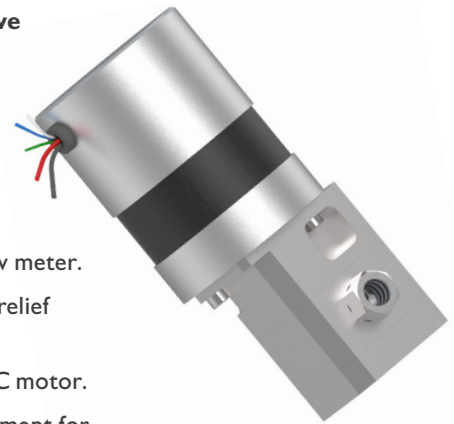


## GEARPUMP 0,48cc

This high-performance gear pump is specifically designed for use in espresso machines but can also be used in other applications for pumping low-viscosity non-aggressive liquids with a maximum temperature of 50°C.

- At 2200 rpm, the pump provides app. 13 ml/sec at 12 bar and 17.5 ml/sec at 1 bar, see performance curve below.
- The pump is made of food-approved materials and complies with current EU standards.
- The pump does not vibrate and is quiet.
- The pump causes very little pulsation of the liquid flow and therefore not affecting a flow meter.
- The pump can be fitted with a non-return valve in the outlet and an adjustable pressure relief valve internally.
- The pump can be delivered fitted with a 24V dc motor, a 24V BLDC motor or a 230V AC motor.
- The pump can be customized and can be used in both new development and as a replacement for solenoid pumps in existing machines.



24V BLDC motor

## OPTIONS

### Flexible motor options

- ✓ DC
- ✓ BLDC
- ✓ AC

### Flexible housing & gear material

- ✓ Stainless steel 316
- ✓ Stainless steel 304
- ✓ Fiber reinforced plastic

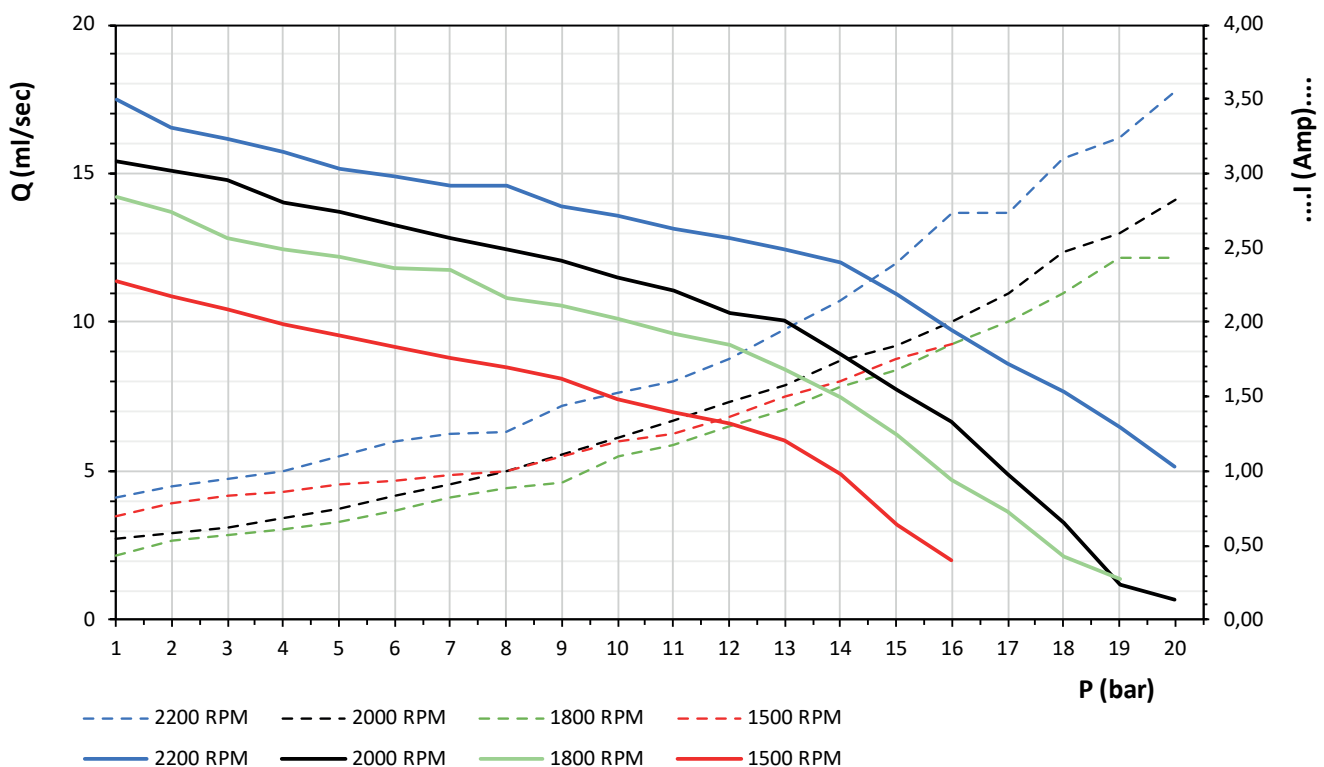
### Mounting options

- ✓ Custom designed mounting brackets
- ✓ Electrical connections
- ✓ Inlet & outlet fittings

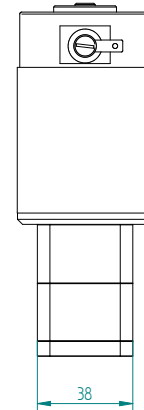
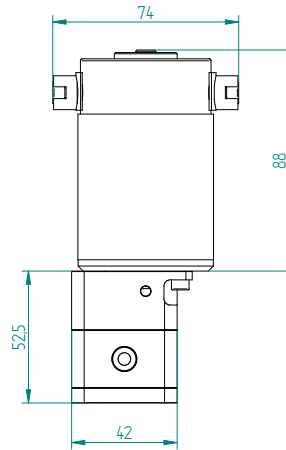
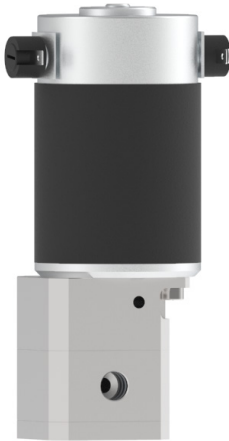
### Alternative pump variants

- ✓ Integrated relief valve
- ✓ Integrated check valve in outlet port. (max. 20bar)
- ✓ Integrated relief-and check valve

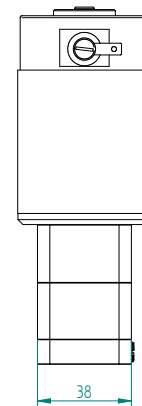
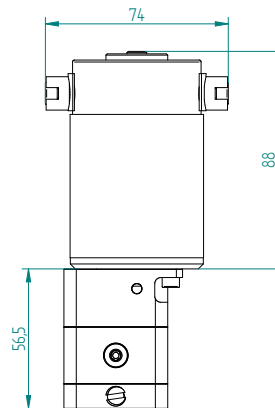
## Typical performance curves for GEARPUMP 0,48cc with speed control



**Pump Unit with DC motor**



**Pump Unit with internal bypass**



**Pump Unit with internal bypass and check valve**

